

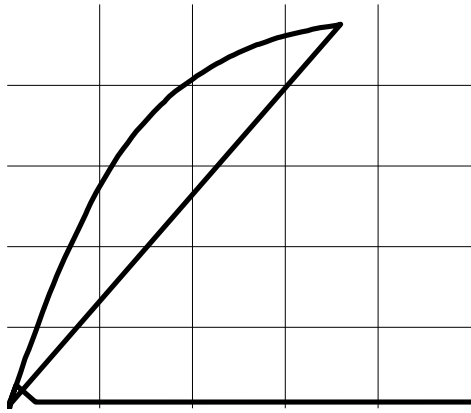
## PRODUCT SUMMARY

$V_{DS}(V)$

$R_{DS(on)}$  (



TYPICAL CHARACTERISTICS 25 °C unless noted



**Output Characteristics**

**Transconductance**

**Capacitance**

TYPICAL CHARACTERISTICS T10

## THERMAL RATINGS

**Normalized Thermal Transient Impedance, Junction-to-Ambient**



